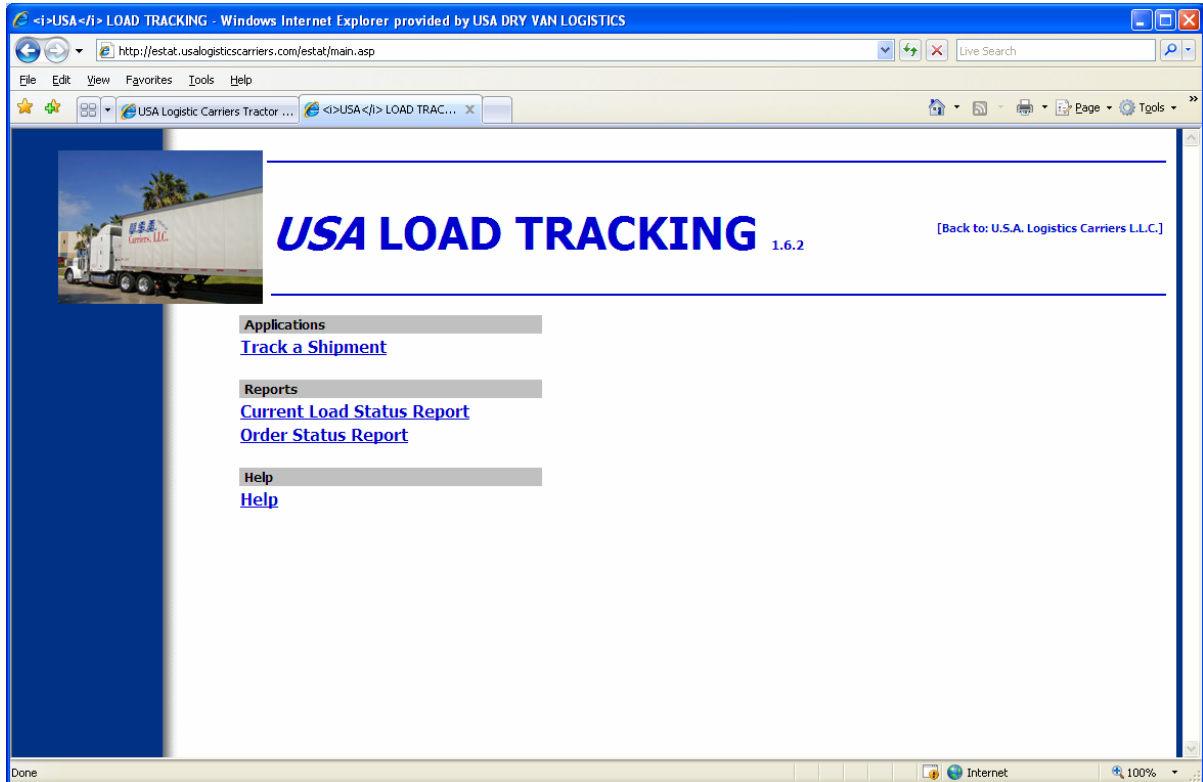


## Overview

When you login to *eStat*, you'll be presented with its main page, containing links to all the modules and functions you are authorized to use. The page will look something like this:



All the *eStat* modules have an easy-to-use help facility.

## Track a Shipment

Shipment Tracking enables you to view information about any shipment for which your company occurs as a Bill-to (or Bill-to, Shipper, Consignee or Order-by, depending on how your eStat profile is setup).

**Note:** Shipment Tracking allows you to track *actual* shipments. Actual shipments are shipments, whether submitted through eStat or not, that are about to be dispatched or that have been dispatched.

On eStat's main page, click **Track a Shipment**. The first page of the Shipment Tracking module is shown here.

**Shipment Tracking** [\[Quick Admin\]](#) [\[Back\]](#) [\[Main\]](#) [\[Help\]](#)

After using Quick Admin to change the company you represent, **Refresh** this page to update its drop-down lists.  
To view a summary of shipments started or scheduled to start within the date range, **click Summary**.  
To change the date range, or to restrict the view to orders with a specific status, shipper, consignee, bill-to or location, use the form below, then **click Summary**. (Only shippers, consignees, bill-tos and locations from **recent orders** are listed.)

From:	<input type="text" value="1/24/2004"/>	through:	<input type="text" value="3/2/2004"/>	
Status:	<input type="text" value="All orders"/>			<input type="button" value="Summary"/>
Shipper:	<input type="text" value="ALL"/>			<input type="button" value="Refresh"/>
Consignee:	<input type="text" value="ALL"/>			
Bill-to:	<input type="text" value="ALL"/>			
Location:	<input type="text" value="ALL"/>			

Display: Billable Events Only:  Event Description:  Event Status:

Or if you know the **Order Number**, enter it here and **click View Shipment**:

Order Number :	<input type="text"/>	<input type="button" value="View Shipment"/>
----------------	----------------------	--

Or if you know any **reference number**, enter it here, along with some additional information, and **click View Shipment**:

Select the Kind of Reference Number:	<input type="radio"/> Order	<input checked="" type="radio"/> Freight	<input type="radio"/> Location
Select a Reference Number Type:	<input type="text" value="Customer Order ID (SID)"/>		
Reference Number:	<input type="text"/>	<input type="button" value="View Shipment"/>	

You can enter an order number or a reference number, or click on the **Summary** button to get a list of shipments for the last month.

By default, the date range is set as 30 days prior to today's date, but you can change it. You can restrict the results to shipments with a specific status, shipper, consignee, or Bill-to. Clicking on the **Summary** button displays a list of the shipments that satisfy the restriction criteria.

The Summary View allows you to view information about the shipments, and to select a specific shipment from the list.

**Shipment Tracking**

[Back] [Back to Main Menu] [Help]

**Orders from 8/1/2000 through 8/14/2000**

(Click on an Reference Number to view details.)

REF# <small>(order#)</small>	Shipping Point	Delivery Point	Bill-to	Start Date	Status
<a href="#">34564101</a> <small>(117866)</small>	BMOC SALES & MARKETING CLEVELAND, OH	MIDWEST RUBBER CUSTOM MIXING BARBERTON, OH	QUIZCO INC,	8/1/2000 8:22:13 AM	Completed
<a href="#">34942401</a> <small>(117868)</small>	BMOC SALES & MARKETING CLEVELAND, OH	GENCORP AUTOMOTIVE WABASH, IN	ACMECO INC, (M & R)	8/1/2000 8:54:00 AM	Completed
<a href="#">35019801</a> <small>(117863)</small>	BMOC SALES & MARKETING CLEVELAND, OH	INTERSTATE CHEMICAL CO. INC. HERMITAGE, PA	ACMECO INC, (M & R)	8/1/2000 6:15:00 PM	Completed
<a href="#">118124</a>	BMOC SALES & MARKETING CLEVELAND, OH	GOODYEAR TIRE ST. MARYS, OH	QUIZCO INC	8/2/2000 5:00:00 AM	Completed
<a href="#">35100901</a> <small>(118126)</small>	BMOC SALES & MARKETING CLEVELAND, OH	M A HANNA BURTON, OH	ACMECO INC, (M & R)	8/2/2000 7:43:42 AM	Completed
<a href="#">34774101</a> <small>(118126)</small>	BMOC SALES & MARKETING CLEVELAND, OH	GOODYEAR CANADA INC BOWMANVILLE, ON	GOODYEAR CANADA INC	8/2/2000 12:56:00 PM	Completed

When you select a shipment by clicking on its order number or Ref#, eStat displays its details.

**Shipment Tracking**

[Back] [Back to Main Menu] [Help]

**Shipment Detail for order with Reference Number: 34942701**

Order Number:	118692
Move Number:	124413
Book Date:	8/3/2000 8:58:00 AM
Status:	Completed

**Stops and Check Calls:**

Stop Status	Stop Location	Stop Event	Scheduled	Actual	Move Number	Current Location	Miles Left
DNE	CLEVELAND OH	BMT		8/4/2000 2:50:00 PM	124413		
DNE	CLEVELAND OH	LLD	8/4/2000 2:51:00 PM	8/4/2000 2:51:00 PM	124413		
DNE	WABASH IN	LUL	8/7/2000 12:00:00 PM	8/7/2000 7:44:54 AM	124413		
DNE	TOLEDO OH	EMT		8/7/2000 2:46:05 PM	124413	CLEVELAND OH	0