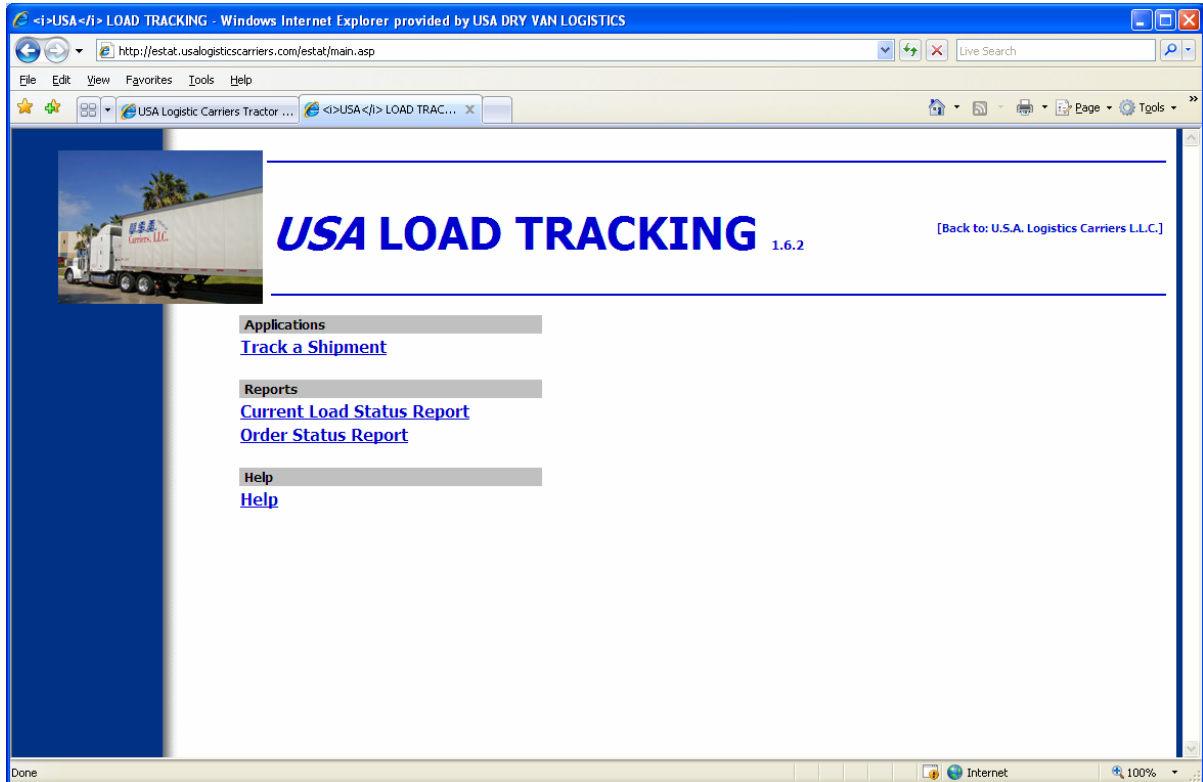


Overview

When you login to *eStat*, you'll be presented with its main page, containing links to all the modules and functions you are authorized to use. The page will look something like this:



All the *eStat* modules have an easy-to-use help facility.

Reports

In eStat, you can produce a number of reports, based on actual shipment and shipment information in the carrier's database. The reports do not include information about eStat-created shipments that have not yet been accepted by the system as actual shipments.

Order Status Report

Based on orders for which your company is a Bill-To, Shipper, Consignee or Order-By, this report presents details on the current state of the order.

The report's main page contains two panels, one for selecting the report criteria, the other for viewing the report.

The screenshot shows the 'Order Status Report' interface. At the top, there are 'Main' and 'Help' tabs. Below the title, there are two sections: 'Select Criteria' and 'Select Content'. The 'Select Criteria' section includes a 'Delivery Date From - To' field with input boxes for '8/17/00' and '8/17/00'. To the right of this section are several status options with checkboxes: 'Canceled Orders', 'New Orders - not Dispatched', 'Orders Dispatched - not Started', 'Trips in progress', 'Completed - not invoiced', 'Invoiced - not transferred', 'Transferred to A/R', and 'Complete - Do Not Invoice'. A 'RUN' button is located to the right of these options. The 'Select Content' section lists various data points with checkboxes: 'Ship date', 'Status', 'Bill-to', 'Stop Ord Miles', 'Last Stop #', 'Missing Paperwork', 'Delivery Date', 'Inv Status', 'Shipper', 'Trip Load Miles', 'Last Leg #', 'Last Leg Driver', 'Leg Out Status', 'Consignee', 'Trip uoad Miles', and 'Last Leg Trailer'.

Specify the report criteria in the top panel of the page.

- **Delivery Date from and Delivery Date to**
Restricts the report contents to orders whose delivery date (scheduled date of the last stop) occurs within this date range.
- **Order statuses (Canceled Order, etc., see the figure below)**
Restricts the report contents to orders having the selected statuses.

You can select the columns that will appear in the report. The report lists all orders satisfying the criteria selected. The report content is based on the columns selected in the Select Contents portion of the page.