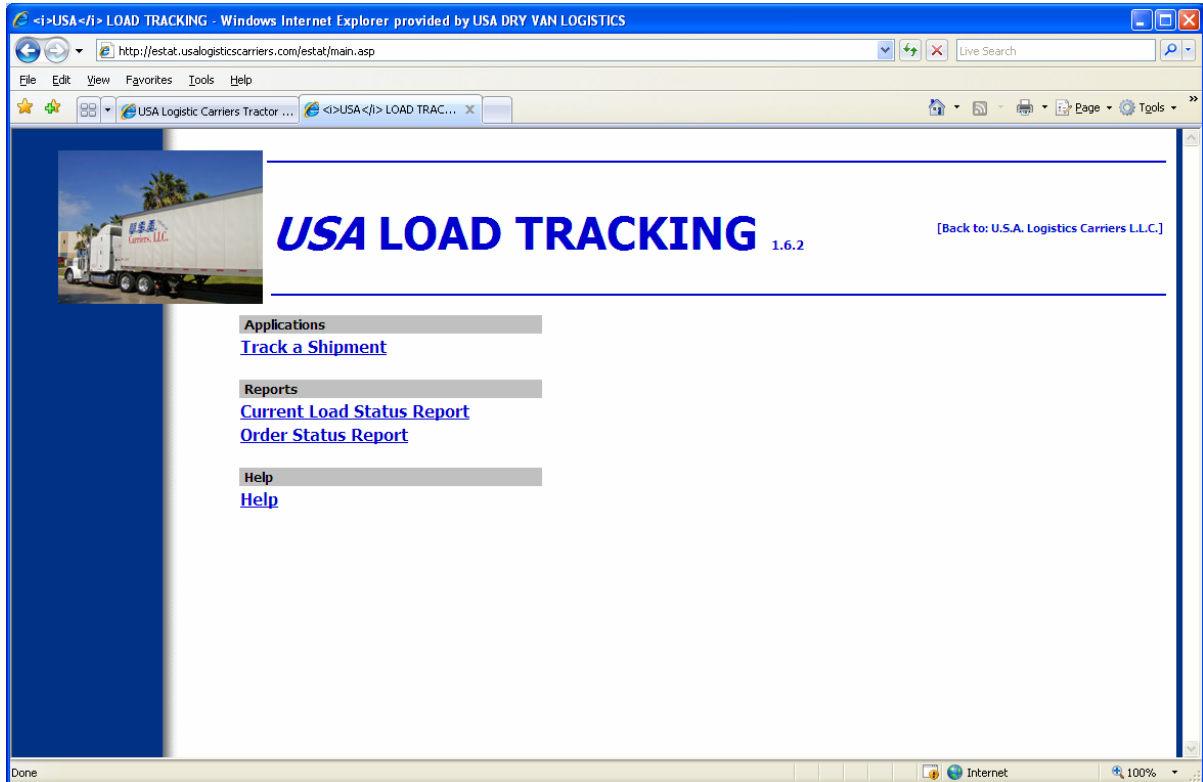


Overview

When you login to *eStat*, you'll be presented with its main page, containing links to all the modules and functions you are authorized to use. The page will look something like this:



All the *eStat* modules have an easy-to-use help facility.

Reports

In eStat, you can produce a number of reports, based on actual shipment and shipment information in the carrier's database. The reports do not include information about eStat-created shipments that have not yet been accepted by the system as actual shipments.

The Current Load Status report

This report shows the load status and location for all shipments on which your company is a Bill-to, (or Bill-to, Shipper, Consignee or Order-by, depending on how your eStat profile is setup), and whose final destination date falls within the specified date range.

Current Load Status **Main** **Help**

This report presents load status for orders on which your company is a **order-by, bill-to, shipper** or **consignee**. It includes all orders whose final destination date falls within the date range you specify.

Orders From: Through:

Status: Restrict report to orders of a specific status.

Freight Events Only: Check here to show only stops that are [freight events](#).

Sort Order: Check here for sort by move (appropriate for [consolidated orders](#)).

Format: Check here to produce report in printable format.

Optional Columns: Check these columns to include them in the report:

Tractor: Reference Number:

Miles Left: Hours Left:

You can limit the report to shipments with a specific status by selecting the shipment **Status**, and can further limit the report to show only live load, live unload, driver load, drop loaded trailer, etc., stops by selecting the **Freight Events Only** check box.

The report shows:

- Order status
- Stops status
- Stop event
- Stop location
- Scheduled/actual arrival time
- Tractor (optional)
- Reference Number (optional)
- Current Location (if available, based on GPS check call data)
- Miles left (optional) (based on GPS check call data)
- Hours left (optional) (based on GPS check call data)

You can use the check boxes in the Optional Columns portion of the page to include/exclude some of this information when requesting a report. The Current Load Status report can be scheduled to run on specific days, at specific times.